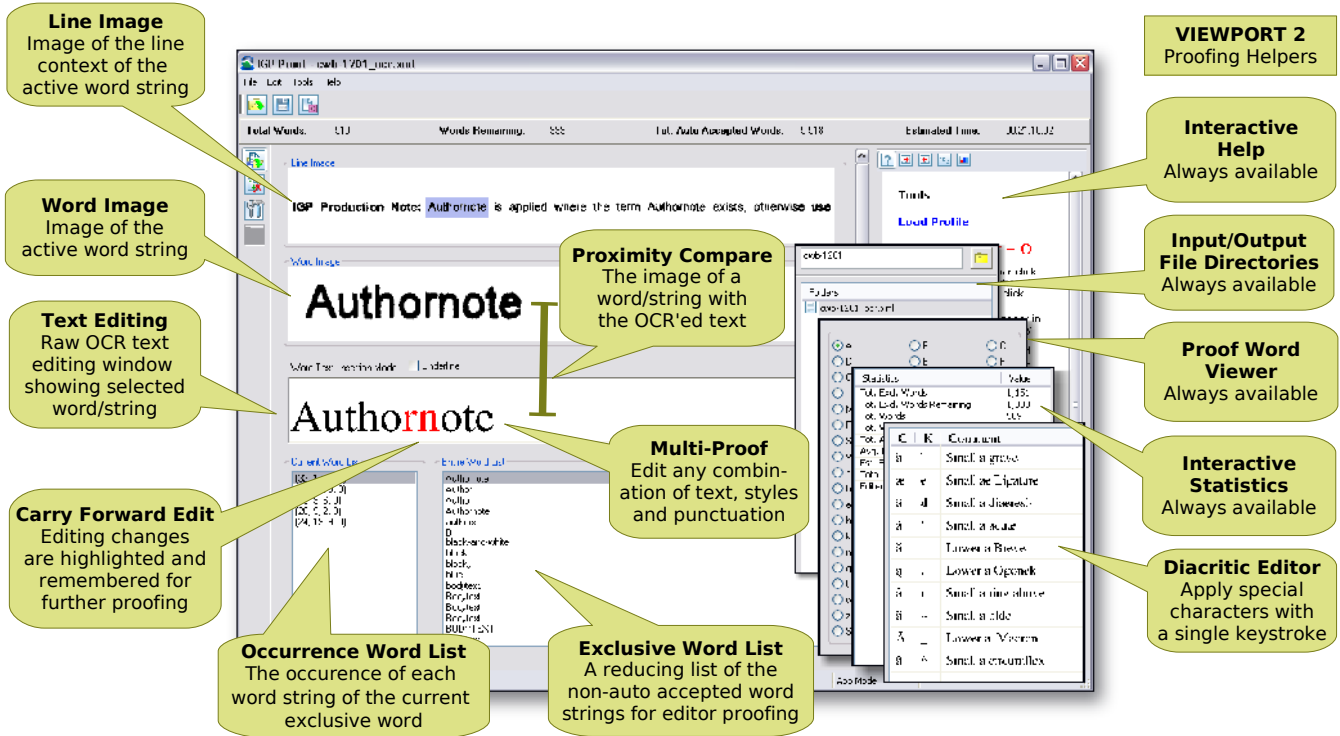


*Simultaneous proofing of content, styles and punctuation*



**Main Features**

- ◆ Heads up list proofer
- ◆ Up to 90% auto-acceptance
- ◆ String combiner for common text patterns
- ◆ "One Key" special character editor
- ◆ Powerful statistics analyzer and reporting
- ◆ Fastest quality audited proofing of complex text
- ◆ Bonus dictionary creation tool

**Overview**

IGP:Proof is a multi-function proofing environment for all Languages using Latin, Greek and Cyrillic alphabets. It works with the processed output of IGP:OCR CGLatin to create finished, proofed content of the highest possible accuracy.

Like all IGP:Content Workbench applications IGP:Proof can be used as a stand-alone application or as workflow node in a distributed information processing grid. It is designed to be easy to use, even by "non-language" novices. The heads-up proofing method doesn't assume any particular language proficiency but capitalizes on "observation" skills that can be developed by anybody.

**The Proofing Problem**

OCR defects are of many types and can occur for many reasons, including disturbances on the page image, over-kerned text non-recognizable characters, fonts, sizes and styles. OCR software typically introduces 1-3% character defects on normal text.

This is not acceptable except for the crudest non-discerning work. Simple heads up and spell-check proofing may find half of these defects, but for modern text processing the minimum acceptable standard is 5 defects per 100,000 characters including spaces, punctuation and special characters.

**Quality and Productivity Enhancers**

IGP:Proof works at many levels to automatically proof content and reduce proofing editor inspection loads across all languages that use Latin, Greek or Cyrillic characters

With IGP:Proof a single-pass proof can deliver a document with fewer defects than five in 100,000 characters – the generally accepted norm for dual key or proofing text processing.

Additional comparison proofing delivers an output quality better than 20 defects per million characters, an unreachable standard with other systems. And IGP:Proof delivers the QA statistics file with every output to validate the quality figures and build your client confidence.

## User friendly

IGP:Proof makes the intimidating job of proofing complex academic, mixed language and scientific texts easy, even by non-specialists. Because it does not require language skills to use, an editor can proof a language in which they have no proficiency. The combination of ease of use, unprecedented quality and visible productivity gains makes IGP:Proof the only choice for serious professional proofing for retro-digitization.

## Accelerators

OCR defects have to be discovered and disposed. When the original content contains complex symbol sets, diacritics and mixed character languages, it can be difficult and time consuming to get editors trained and up to speed across thousands of characters. IGP:Proof has a high-speed single keystroke interface to quickly key diacritics, change the keyboard to various language tables and trap any erroneous character combinations.

## Application Features

### General Proofing Features

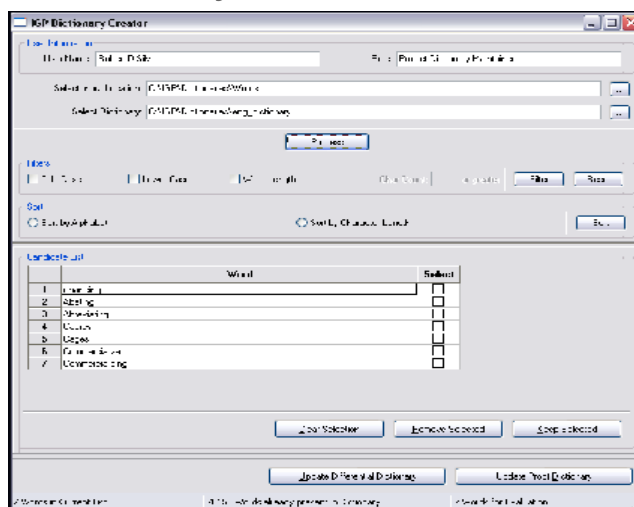
- Ultra-fast document analyser – 1 Million strings in < 30 secs
- Evaluation and auto-acceptance of standard English vocabulary better than 90%. Specialist vocabulary performance based on availability of string dictionaries
- Heads-up focus-string window with full graphical line window.
- Proof and correct styles (Italic, bold, underline), punctuation and characters simultaneously minimizing QC time.
- Enforcement of punctuation space rules, to create consistent output, especially valuable with type-written originals.
- Special character navigation with select or cursor modes for faster correction of defective characters
- Built-in document image viewer to view image of original material at any time.
- Simultaneous punctuation and character string proofing with special leading and trailing punctuation navigation
- Special punctuation proofing allows viewing of content by leading and trailing variants
- Diacritic editor. One keystroke Unicode diacritic and symbol processing. Over 2,000 Unicode characters built in, including: Latin, Greek, math characters, punctuation, symbols and others
- Discriminating Pattern Analyser -pre-emptive defect pattern recognition for easy accurate proofing.
- Custom vocabulary lists for verification of specialist, technical and language specific vocabularies.
- Custom vocabulary can be added by project or generically
- Pre-emptive corrector recognizes string and user correction patterns for auto-look-ahead proofing
- Output auto-XML tagged documents, reduce effort in subsequent production steps.
- Output HTML, Text, IGP:Interchange XML (for subsequent IGP application use)
- Quality Assurance and productivity reports standard.

### Modes and Quality Specifications

- Spell Check Mode for quick single-pass proofing. Uses built-in spell-checker plus custom vocabulary lists. (Word-processor quality)
- Single Pass Full Proof Mode for better than 50 residual defects per 1,000,000 proofed characters

- Dual Proof Comparison Mode for better than 10 residual defects per 1,000,000 proofed characters.
- Proof keyed text (no line and word images)

## Bonus Dictionary Creator



A special bonus tool which allows you to create and maintain your own custom, project and domain/language specific proofing dictionaries.

## IGP:Encode XML Toolkit

- Supplied IGP:Proof Toolkit for full setup and project configuration. Allows publishing of Setup, Profiles and workflow configuration components.

## Enterprise Features

- Can be used in Local (stand-alone), Profiles or Grid modes
- Connects to IGP:Distributor server through IGD:Grid Connector when installed and allows separation of content on a project basis.
- See the IGP:Distributor Fact Sheet for More information.

## Software and Hardware Requirements

### Operating System Environment

- Operating Systems Linux (Kernel 2.6) or Windows (XP Home or Professional) • Recommended window environment for Linux – KDE 2.0. or a user friendly installation of Linux such as Xandros or Ubuntu • Full Linux Installation CD-ROM provided on request

### Recommended Hardware

- 32/64 bit Processor with better than 2GHz processor speed • 512Mbyte RAM minimum. 1GByte RAM highly recommended • 30Mbyte common application software library space on hard disk • 500kByte application space on hard disk

**Infogrid Pacific Pte Ltd**  
141 Cecil St #06-05  
Tung Ann Assn. Bldg.  
Singapore 069541

Tel: +65 62243798  
Fax: +65 62243797

email: sales@infogridpacific.com  
www.infogridpacific.com